



Well-Centric

The Surface Intervention System (SIS)

Malcolm Adam

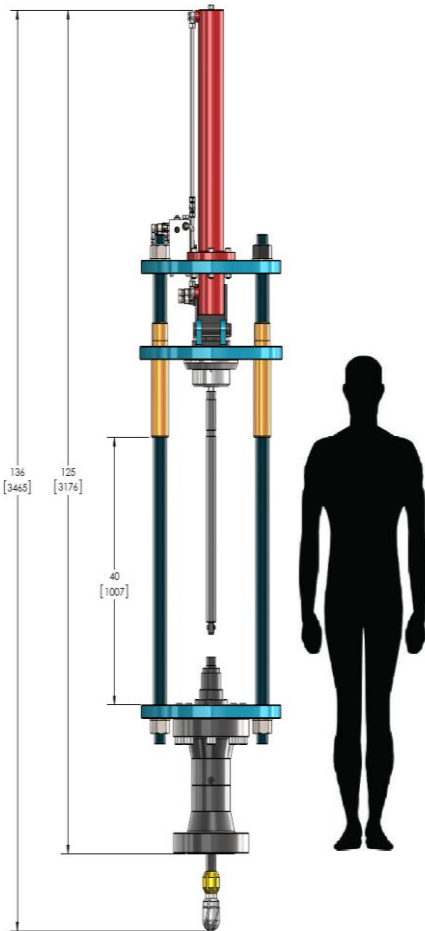
Sales Director

The Surface Intervention System (SIS)



- Self contained, hydraulically operated, near surface intervention system.
- Quick, easy and safe to rig-up and rig-down
- Multiple intervention operations can be conducted consecutively, increasing operational efficiency
- Requires fewer personnel (the same personnel can carry out remedial tree repairs)
- Reduced footprint, operable in smaller, restrictive spaces
- Barriers provided for live-well entry
- Reduces requirement for traditional intervention technologies

The SIS – Specification



GVM General Dimensions

Specification:

Tool working pressure rating:	10,000 psi / 690 bar
Total height:	136" / 3,455 mm
Total width:	26" / 660 mm
Weight:	2,400 lbs / 1,090 kg
Bottom connection:	5 1/8" 10M flange, 10,000 psi (crossovers can be supplied to suit tree connection)
Push/Pull rating:	70klbs/40klbs

The SIS – Functions

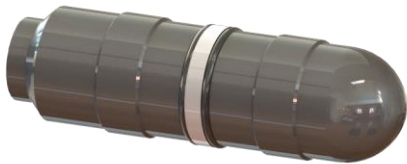


- Milling
 - Drills through stuck or inoperable gate valves and other near wellhead blockages up to 7" in diameter

- Cleanout
 - A wide selection of tool attachments allows multiple clean-out operations to be carried out using the SIS including scraping, brushing and debris and swarf removal.

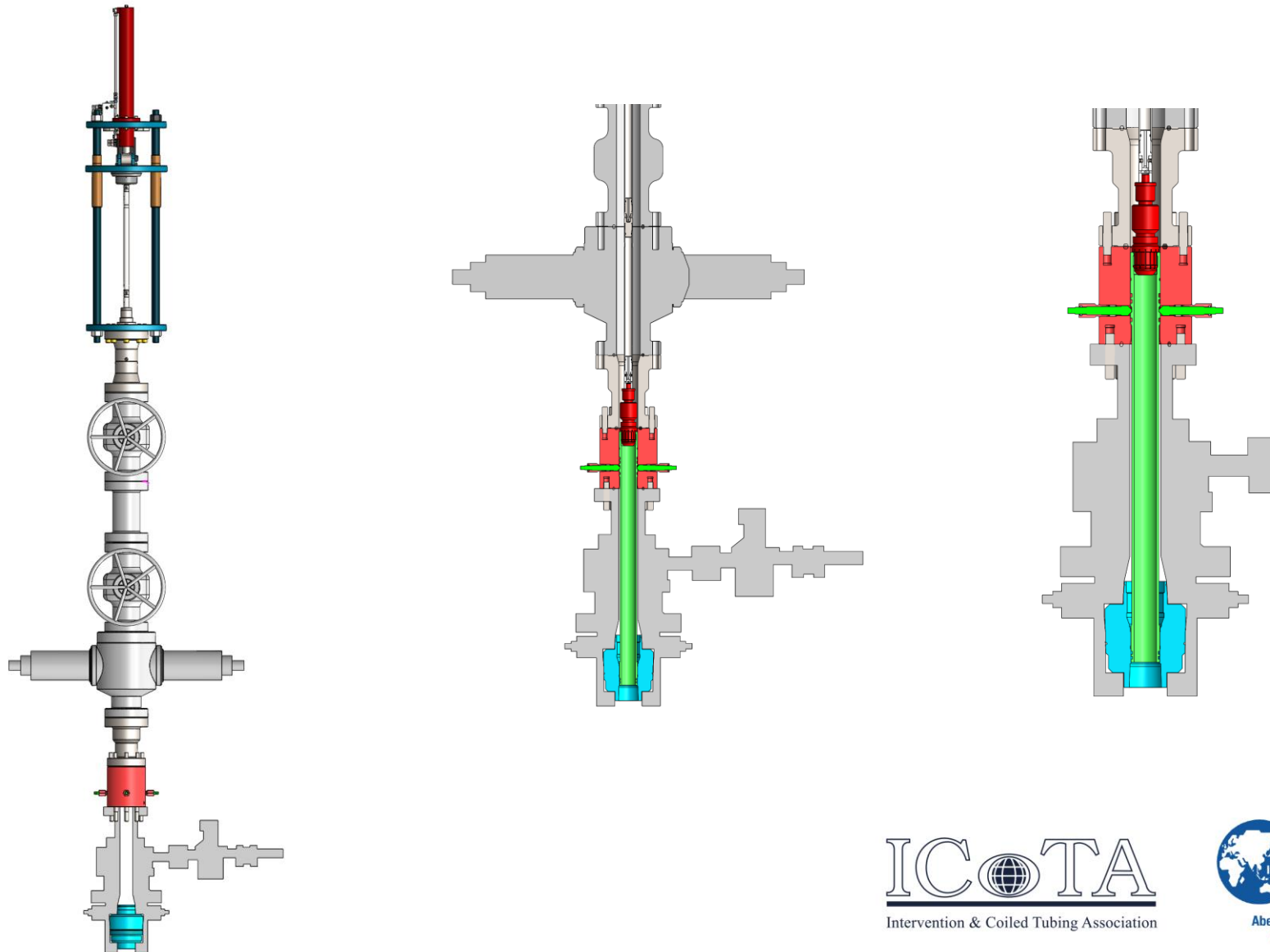


- Inspection
 - The SIS can be used to carry out internal inspection of near surface areas such Xmas tree internals and tubing hanger profiles using memory callipers or a memory camera.



- Plug Setting
 - With impressive push (70,000 lbs) and pull (40,000 lbs) capacity, as well as the ability to hydraulically rotate the SIS can be used to set and retrieve a wide range of tubing hanger and tubing set plugs.

The SIS – Frac Sleeve Deployment





An innovative technology designed to perform a number of surface intervention operations with a single tool



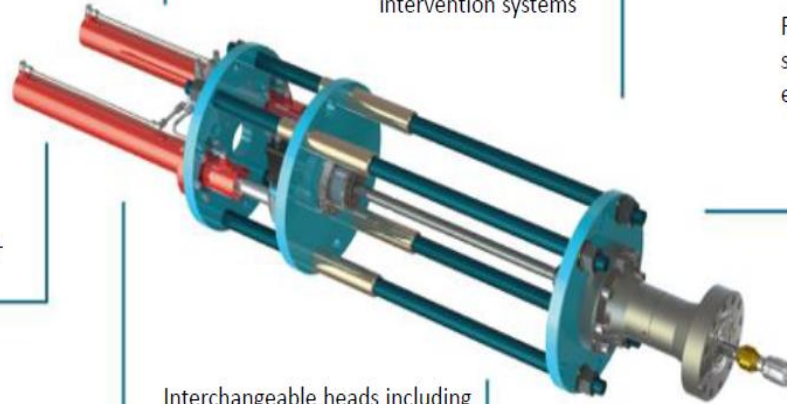
An improved, compact solution to traditional intervention systems



Reinstates production safely, quickly and efficiently



Side entry drill rod installation means no lubricator is required, saving rig-up height



Longer stroke allows operations beyond the Xmas Tree into the tubing hanger



Barriers provided for live Xmas Tree entry

Interchangeable heads including drill bits, shallow plugs, magnets, brushes, water blast nozzles, scrapers provides additional clean-out capability



Significant time and cost savings are obtained by using a single tool for multiple operations



Well-Centric

ICOTA

Intervention & Coiled Tubing Association



Aberdeen Section

www.spe-uk.org



Well-Centric

Thank you for your attention.

Malcolm Adam
Sales Director

Email: sales@wellcentric.co.uk

Tel: +44 (0)1224 937600

